

***Pomaderris velutina* J.H. Willis**

P. velutina is a small to medium shrub to 2m tall found in shrubland, woodland and open forest, usually in rocky soils near waterways.

Distribution and Abundance: It is not common in NSW, occurring in the south-eastern part, south from Lake Burragorang. Also in Eastern Vic.

Local Distribution: In NSW in the Araluen, Kydra and Cowra Creek areas.

Similar Species: *P. subcapitata* from which it differs in having stalked flowers in loosely arranged panicles rather than sessile flowers in compact clusters.



Australian National Botanic Gardens



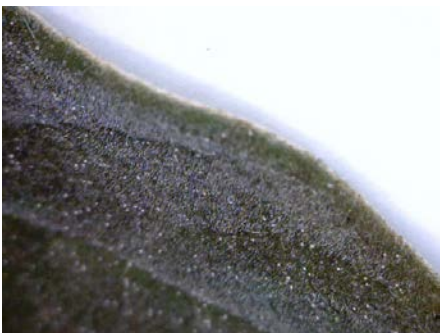
New growth



Young stems with spreading long rusty hairs



Leaves oblong to ± elliptic, mostly 1-3cm long, 6-15mm wide



Upper leaf surface hairy, veins scarcely impressed



Lower surface sparsely scattered with long hairs, long hairs also prominent on secondary veins and petiole



Stipules to c. 10mm long



Buds with long whitish. Flowers pale yellow, in loose panicles



Petals usually present



Capsule, sepals and hypanthium with scattered long whitish to rusty hairs