

***Pomaderris ferruginea* Sieber ex Fenzl – Rusty Pomaderris**

*P. ferruginea* is a medium to tall open shrub 1-4m tall found in open forest and woodland.

**Distribution and Abundance:** It is widespread in sclerophyll forest, often along streams, from south-eastern Qld to just west of Melbourne, Vic, mainly on the coastal side of the Great Dividing Range.

**Local Distribution:** On roadsides in the Mayfield area and in Budawang National Park.

**Similar Species:** *P. lanigera* from which it differs in having a glabrous leaf upper surface (rather than velvety with dense simple hairs) and lower surface with rusty hairs over a white tomentum (rather than only a few rusty hairs along the veins). *P. ligustrina*, from which it differs in having flowers with petals and usually smaller leaves.



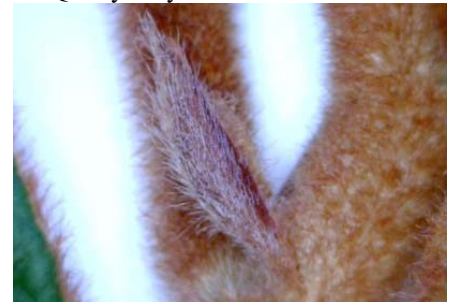
Cullulla Quarry Mayfield



New growth rusty-hairy



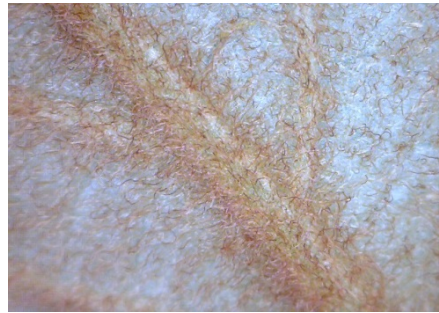
Stems rusty pubescent with spreading simple hairs



Stipules ovate to lanceolate, about 8mm long, shed early



Leaves lanceolate to elliptic, 3-10cm long, 10-35mm wide, apex acute to obtuse; margins ± flat; upper surface glabrous and dull dark green; secondary veins regularly arranged, looping at the margins, tertiary veins apparent



Leaf lower surface with longer curly rusty hairs above a whitish tomentum often giving a rusty appearance



Buds with long silky hairs



Flowers yellow, in terminal panicles 5-10 cm in diameter



Petals present



Capsule and hypanthium with long silky hairs