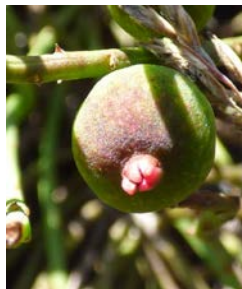


Wednesday Walk – Shanahan’s Mountain – 11 February 2015

The walk starts from the car park on the eastern side of Boboyan Rd, and is a 3km loop into the Booth Range. There are good views from the top into the Naas Valley and to the Clear Range and Tinderries. The first part of the walk is dominated by an understorey of *Podolobium alpestre*, *Daviesia ulicifolia*, *Persoonia chamaepeuce*, *Exocarpos strictus* (with ripe fruit), some *Choretrum pauciflorum* and *Leucopogon fletcheri* ssp. *brevisepalus*. Scattered among it were lots of *Lobelia dentata*, *Stylidium graminifolium*, *Veronica perfoliata*, *Brachyscome spathulata*, various *Wahlenbergia* sp. all with some flowers and *Olearia ramulosa* var. *stricta* flowering beautifully. On the hurried descent with thunder rumbling, we saw a lot of *Polyscias sambucifolia*, some with fruit. Then the storm hit. For the images below: MB = Martin Butterfield, RF = Roger Farrow



General view MB



Choretrum pauciflorum fruit MB



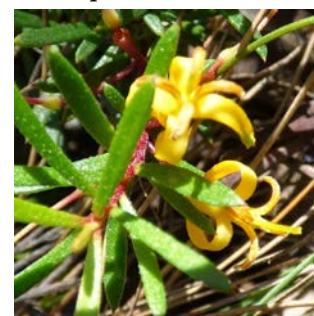
Exocarpos strictus fruit MB



Oxylobium ellipticum MB



Podolobium alpestre MB



Persoonia chamaepeuce MB



Acrothamnus hookeri in bud RF



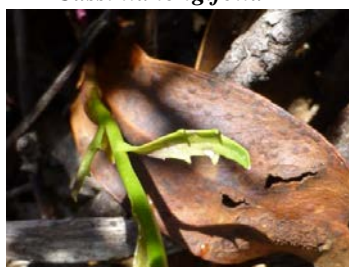
Cassinia longifolia RF



Tetratheca bauerifolia RF



Lobelia dentata RF



Lobelia dentata foliage RF



Geranium solanderi RF



Olearia ramulosa var. *stricta*
RF



Corunastylis sp. MB



Specularantha rubescens RF



Diplodium decurvum MB



View from the top MB



Eriochilus magenteus MB



Wahlenbergia gloriosa RF

Plant List for Shanahan's Mountain –11 February 2015

Acacia dealbata	Hibbertia obtusifolia
Acaena novae-zelandiae	Hovea heterophylla
Acaena ovina	Hydrocotyle laxiflora
Acrothamnus hookeri	Kunzea ericoides
Ajuga australis	Leucopogon fletcheri ssp. brevisepalus
Anthosachne scabra	Lobelia dentata
Arthropodium milleflorum	Lobelia pedunculata
Asplenium flabellifolium	Lomandra filiformis ssp. filiformis
Bossiaea foliosa	Lomandra longifolia
Brachyloma daphnoides	Luzula sp.
Brachyscome spathulata	Microlaena stipoides
Bulbine glauca	Olearia erubescens
Carex breviculmis	Olearia ramulosa var. stricta
Carex incomitata	Oreomyrrhis eriopoda
Carex inversa	Oxylobium ellipticum
Cassinia aculeata	Ozothamnus thyrsoides
Cassinia longifolia	Pelargonium australe
Cheilanthes sp.	Persoonia chamaepeuce
Choretrum pauciflorum	Pimelea glauca
Clematis aristata	Poa induta
Corunastylis sp.	Poa sieberiana
Crassula sieberiana	Podolobium alpestre
Cymbonotus lawsonianus	Polyscias sambucifolia
Cynoglossum australe	Rubus parvifolius
Cynoglossum suaveolens	Rytidosperma pallidum
Daucus glochidiatus	Scleranthus biflorus
Daviesia ulicifolia	Senecio gunnii
Deyeuxia quadriseta	Senecio prenanthoides
Dichelachne sieberiana	Senecio quadridentatus
Dichondra repens	Solenogyne dominii
Diplodium decurvum	Specularantha rubescens
Eriochilus magenteus	Stackhousia monogyna
Eucalyptus dalrympleana	Stellaria pungens
Eucalyptus pauciflora	Stylidium graminifolium
Euchiton involucratus	Tetratheca bauerifolia
Exocarpos strictus	Themeda triandra
Geranium solanderi	Veronica calycina
Goodenia hederacea ssp. alpestris	Veronica perfoliata
Grevillea lanigera	Viola betonicifolia
Helichrysum rutidolepis	Wahlenbergia gloriosa

Wahlenbergia gracilis
Wahlenbergia multicaulis
Wahlenbergia stricta

Bird List

Laughing Kookaburra
Crimson Rosella
Superb Lyrebird
White-throated Treecreeper
Superb Fairy-wren
Yellow-faced Honeyeater
Red Wattlebird
White-naped Honeyeater
Brown-headed Honeyeater
White-browed Scrubwren
Grey Currawong
Black-faced Cuckooshrike