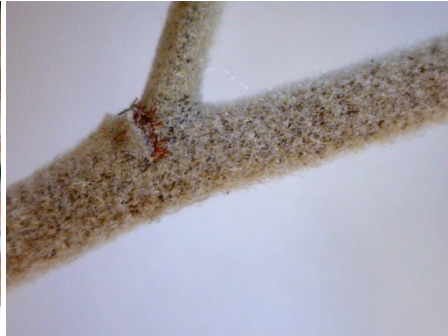


## Pomaderris Features

Young stems  $\pm$  tomentose, hairs generally stellate or mixed with, or concealed by, longer simple hairs



Rusty stellate hairs - *P. prunifolia*



Shortly whitish stellate-tomentose - *P. pallida*



Pubescent with spreading simple hairs - *P. ferruginea*

## Stipules



Stipules lanceolate - *P. brogoensis*



Stipules ovate to lanceolate, about 8mm long, shed early - *P. ferruginea*



Stipules to c. 10mm long, falling early - *P. subcapitata*