

***Pomaderris prunifolia* Fenzl var. *prunifolia* – Plum-leaf Pomaderris**

*P. prunifolia* var. *prunifolia* is a multi-branched shrub 1-3m tall found on rocky slopes, often along creeks.

**Distribution and Abundance:** An uncommon species occurring mainly south of the Hunter Valley in NSW, also Qld & Vic.

**Local Distribution:** There is a record in the Atlas of Living Australia near the Gudgenby River south of Tharwa. Also thought to be on the lower western slopes of the Bullen Range near the Tidbinbilla Tracking Station and on the Murrumbidgee River south of Michelago. Confirmation is planned in spring 2014.

**Similar Species:** *P. betulina*, from which it differs in having deciduous bracts and visible pedicels. All images are of a garden specimen.



Carwoola Garden Specimen



New growth with rusty stellate hairs



Stellate hairs on stems



Leaves ovate to oblong to ± elliptic, 2-4cm long, 8-15mm wide. Apex broadly acute, margins ± toothed



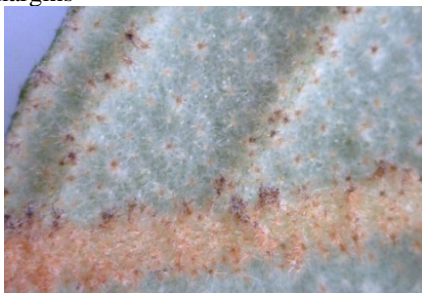
Leaves discolorous, secondary veins prominent on both surfaces, reaching the margins



Secondary veins prominent on both surfaces, reaching the margins



Leaf upper surface very wrinkled, scabrous with simple hairs, rarely ± glabrous.



Leaf lower surface ± rusty with stellate hairs, particularly on veins



Buds with long whitish hairs



Flowers pale yellow – cream



Flowers shortly pedicellate in short panicles



Petals absent



Capsule with long rusty hairs, hypanthium with whitish hairs