

Pomaderris Features

Leaves - upper surface - glabrous or hairy (simple or stellate hairs)



Glabrous - *P. betulina* ssp. *actensis*



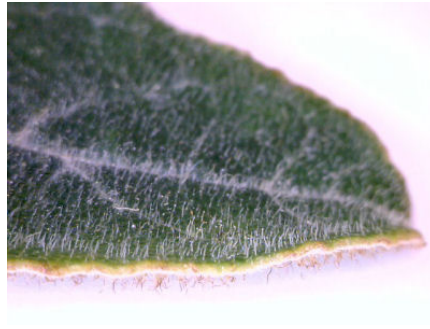
Simple hairs - *P. pauciflora*



Stellate hairs - *P. angustifolia*



Minute stellate hairs - *P. brogoensis*



Velvety with sparse to moderately dense simple hairs - *P. lanigera*



Velvety with a covering of minute stellate hairs - *P. pallida*

Leaves – lower surface ± tomentose, hairs generally stellate or mixed with, or concealed by, longer simple hairs



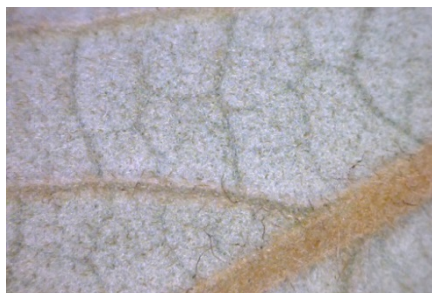
Veins and surface between veins with straight appressed or semi-appressed simple hairs, often appearing silky – *P. andromedifolia* ssp. *andromedifolia*



Short whitish and longer rusty curly hairs – *P. lanigera*



Silky with whitish simple hairs – *P. ledifolia*



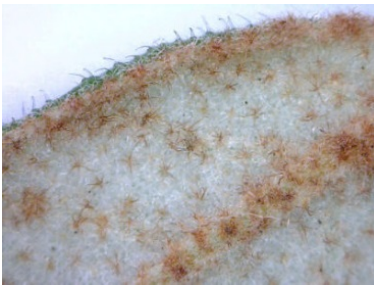
Whitish tomentum with scattered long simple hairs – *P. intermedia*



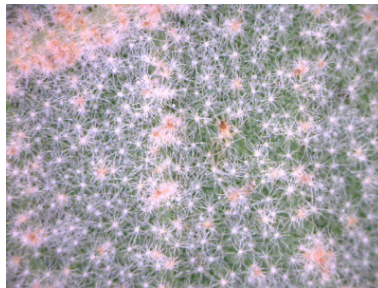
Long brownish hairs above a whitish tomentum; hair tufts at ends of veins – *P. eriocephala*



Silky with simple hairs whitish to yellowish – *P. virgata*



Tomentose with stellate hairs, at least veins rusty – *P. betulina* ssp. *betulina*



Stellate hairs – *P. aspera*



Whitish stellate-tomentose – *P. pallida*

Veins



Veins deeply impressed, secondary veins reaching the margins – *P. aspera*



Secondary veins reaching margins and ending in hair tufts – *P. eriocephala*



Secondary and tertiary veins apparent; secondary veins looping to inside, not reaching margins - *P. intermedia*