

Pomaderris intermedia Sieber ex DC.

P. intermedia is a small to medium shrub to 3m tall found in open sclerophyll forest, woodland and heathland.

Distribution and Abundance: It is distributed from Glen Innes, NSW, along mainly the eastern and southern slopes of the Great Dividing Range to south-central Vic. Also in northern Tas.

Local Distribution: On Black Mountain, ACT, and a roadside between Tarago and Braidwood.

Similar Species: *P. elliptica* from which it differs in having simple hairs on the leaf undersurface (rather than short stellate hairs). *P. lanigera* from which it differs in not having reddish-brown young branches. Hybrids occur with *P. elliptica* and *P. lanigera*. *P. ferruginea* is also similar but has very rusty new shoots.



Black Mountain, ACT)



Stems with scattered longer simple or clustered hairs over a short whitish stellate tomentum



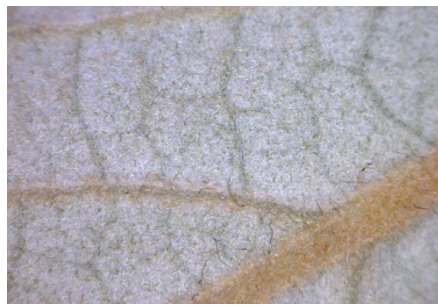
Stipules brown with white hairs falling early



Leaves elliptic to ovate, 4-12cm long, 15-45mm wide, apex ± acute, sometimes folded, margins undulate; veins looping not reaching margins; tertiary veins distinct



Leaf upper surface glabrous and dark green



Leaf lower surface whitish tomentum with scattered longer simple hairs, especially along veins and margins



Buds with white simple hairs



Flowers yellow, in corymbose panicles above the leaves



Petals auriculate



Capsule and hypanthium stellate-hairy, sparsely to densely tomentose with longer simple hairs