

## Wednesday Walk on Mt Jerrabomberra – 20 August 2014

The walk began from O'Halloran Drive in Jerrabomberra and mainly followed the summit road to the new lookout. The return took in the lower eastern loop. There were many plants flowering, with good displays of *Grevillea ramosissima*, *Pimelea linifolia*, *Acacia pycnantha*, *A. dealbata*, *A. gunnii*, *A. genistifolia*, *Hovea heterophylla*, *Hakea decurrens* and *Pterostylis nutans*. Other plants of interest were *Phyllanthus hirtellus*, *Pomax umbellata*, *Pleurosorus rutifolius* and a number of orchid leaves.

For the images below: BW = Bill Willis, DH = Dave Herald, JG = Jean Geue



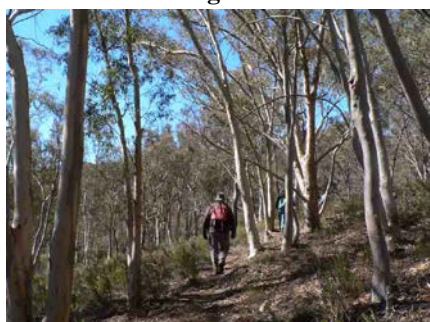
Starting off DH



*Acacia rubida* JG



*Acacia rubida* JG



Side track with *Eucalyptus rossii* JG



*Hardenbergia violacea* JG



*Hardenbergia violacea* JG



*Hovea heterophylla* BW



*Grevillea ramosissima* BW



*Hakea decurrens* BW



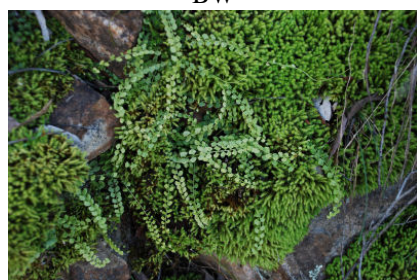
*Pomax umbellata* in bud & old flowers  
BW



*Pterostylis nutans* BW



*Stypantra glauca* BW



*Asplenium flabellifolium* & moss BW



*Clematis leptophylla* JG



New lookout JG

## Plant List for Mt Jerrabomberra – 20 August 2014

? indicates that those present were unsure of the plant name

Acacia dealbata	Goodenia hederacea
Acacia genistifolia	Grevillea ramosissima
Acacia gunnii	Hakea decurrens
Acacia implexa	Hardenbergia violacea
Acacia mearnsii	Hibbertia obtusifolia
Acacia penninervis	Hovea heterophylla
Acacia pycnantha	Hydrocotyle laxiflora
Acacia rubida	Indigofera australis
Amyema miquelii	Kunzea ericoides
Amyema pendula	Kunzea parvifolia
Anthosachne scabra	Lepidosperma laterale
Arachnorchis sp. (leaf)	Leptospermum multicaule
Aristida ramosa	Leucochrysum albicans var. tricolor
Arthropodium milleflorum	Leucopogon fletcheri ssp. brevisepalus
Asplenium flabellifolium	Lissanthe strigosa
Astroloma humifusum	Lomandra filiformis ssp. coriacea
Austrostipa bigeniculata	Lomandra filiformis ssp. filiformis
Austrostipa densiflora	Lomandra longifolia
Austrostipa scabra ssp. falcata	Lomandra multiflora
Bossiaea buxifolia	Luzula densiflora
Bothriochloa macra	Melichrus urceolatus
Brachyloma daphnoides	Monotoca scoparia
Bulbine bulbosa	Panicum effusum
Bursaria spinosa	Phyllanthus hirtellus
Cassinia longifolia	Pimelea curviflora
Cassinia quinquefaria	Pimelea linifolia
Cassytha sp.	Pleurosorus rutifolius
Cheilanthes austrotenuifolia	Poa sp.
Clematis leptophylla	Pomaderris betulina
Cotula australis	Pomax umbellata
Crassula sieberiana	Pterostylis nutans
Cryptandra amara var. longiflora	Pultenaea microphylla
Cymbonotus lawsonianus	Pultenaea procumbens
Daucus glochidiatus	Rytidosperma fulvum
Daviesia mimosoides	Rytidosperma pallidum
Desmodium varians	Senecio prenanthoides
Dianella revoluta	Senecio quadridentatus
Dichelachne micrantha	Solanum linearifolium
Dillwynia sericea	Stackhousia monogyna
Dodonaea viscosa ssp. angustissima	Stellaria pungens
Einadia hastata	Stylidium graminifolium
Eucalyptus macrorhyncha	Stypandra glauca
Eucalyptus melliodora	Styphelia triflora
Eucalyptus polyanthemus	Thelymitra sp.
Eucalyptus rossii	Themeda triandra
Exocarpos cupressiformis	Veronica calycina
Galium gaudichaudii	Veronica perfoliata
Geranium sp.	Vittadinia gracilis
Glycine clandestina	Wahlenbergia stricta
Gompholobium huegelii	Xerochrysum viscosum
Gonocarpus tetragynus	