

Wednesday Walk – Mt Ainslie-Mt Majura Saddle

The walk began from Kellaway Street, Hackett, and followed the equestrian trail before we turned left to climb to the ridge where we had wonderful views both sides. Although weedy along the ridge, there were some lovely old trees and a very large *Solanum linearifolium*. We turned left at the water tank and went in to the two dams before returning on a narrow track between the powerlines and the houses. We saw a surprising number of things flowering. Many *Daviesia genistifolia* were in full flower. Some of the wattles were just starting - *Acacia parramattensis*, *A. rubida*, *A. dealbata* and *A. paradoxa*. We also saw flowers on *Allocasuarina verticillata*, *Hardenbergia violacea*, *Wahlenbergia stricta*, *Hibbertia obtusifolia*, *Solanum linearifolium*, *Cryptandra amara* var. *longiflora* and *Leucochrysum albicans* var. *tricolor*. An addition to our list was *Cryptandra amara* var. *floribunda* which was just at the end of its flowering and was pink and red. Another addition was *Einadia hastata*. There has been a lot of activity by the Park Care people getting rid of weeds.

For the photos below: DR = Deborah Reynolds, JG = Jean Geue



View from the top JG



Acacia implexa JG



Acacia implexa leaves JG



Eucalyptus rossii DR



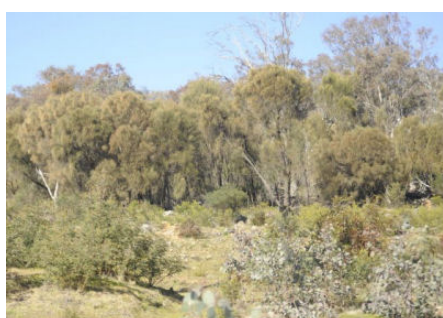
Acacia dealbata DR



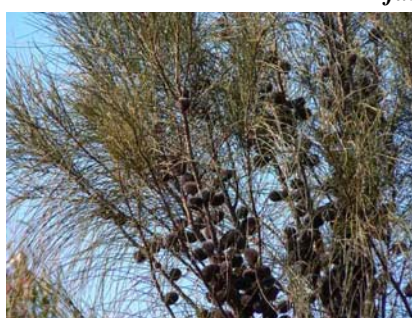
Austrostipa scabra ssp.
falcata DR



Leucochrysum albicans var.
tricolor JG



Background *Allocasuarina verticillata*
DR



Allocasuarina verticillata fruit JG



Daviesia genistifolia JG



Acacia paradoxa JG



Cryptandra amara var. *floribunda* JG



Dodonaea viscosa ssp. *angustissima* JG



Solanum linearifolium DR



Eucalyptus bridgesiana JG



Walkers JG

Plant List for Mt Ainslie-Mt Majura 23 July 2014

? indicates that those present were unsure of the plant name

| | |
|---------------------------------|------------------------------------|
| Acacia baileyana | Cotula australis |
| Acacia dealbata | Cryptandra amara var. floribunda |
| Acacia decurrens | Cryptandra amara var. longiflora |
| Acacia gunnii | Cymbonotus lawsonianus |
| Acacia implexa | Cynoglossum sp. |
| Acacia mearnsii | Daucus glochidiatus |
| Acacia melanoxylon | Daviesia genistifolia |
| Acacia paradoxa | Daviesia mimosoides |
| Acacia parramattensis | Dianella revoluta |
| Acacia pycnantha | Dichondra repens |
| Acacia rubida | Dillwynia sericea |
| Acacia ulicifolia | Dodonaea viscosa ssp. angustissima |
| Acaena novae-zelandiae | Einadia hastata |
| Acaena ovina | Einadia nutans |
| Allocasuarina verticillata | Erodium crinitum |
| Amyema miquelii | Eucalyptus blakelyi |
| Anthosachne scabra | Eucalyptus bridgesiana |
| Aristida ramosa | Eucalyptus mannifera |
| Arthropodium minus | Eucalyptus melliodora |
| Asperula conferta | Eucalyptus polyanthemus |
| Astroloma humifusum | Eucalyptus rossii |
| Austrodanthonia sp. | Exocarpos cupressiformis |
| Austrostipa ? setacea | Galium gaudichaudii |
| Austrostipa densiflora | Geranium sp. |
| Austrostipa scabra ssp. falcata | Gonocarpus tetragynus |
| Bothriochloa macra | Goodenia hederacea |
| Brachychiton populneus | Goodenia pinnatifida |
| Brachyloma daphnoides | Hakea decurrens |
| Bulbine bulbosa | Haloragis heterophylla |
| Bursaria spinosa | Hardenbergia violacea |
| Carex appressa | Hibbertia obtusifolia |
| Cassinia arcuata | Hovea heterophylla |
| Cassinia hewsoniae | Hydrocotyle laxiflora |
| Cassinia longifolia | Hypericum gramineum |
| Cassinia quinquefaria | Indigofera australis |
| Cheilanthes austrotenuifolia | Isoetopsis graminifolia |
| Chrysocephalum apiculatum | Juncus sp. |
| Chrysocephalum semipapposum | Kunzea parvifolia |
| Clematis leptophylla | Lepidosperma laterale |
| Convolvulus angustissimus | Leptorhynchus squamatus |

Leucochrysum albicans var. tricolor
Lomandra filiformis ssp. coriacea
Lomandra filiformis ssp. filiformis
Lomandra multiflora
Luzula densiflora
Melichrus urceolatus
Microlaena stipoides
Panicum effusum
Pimelea curviflora
Plantago varia
Poa sieberiana
Pultenaea procumbens
Pultenaea subspicata
Rytidosperma pallidum
Senecio quadridentatus

Solanum linearifolium
Solenogyne dominii
Stackhousia monogyna
Stuartina muelleri
Styphelia triflora
Themeda triandra
Tricoryne elatior
Triptilodiscus pygmaeus
Vittadinia cuneata
Vittadinia gracilis
Vittadinia muelleri
Wahlenbergia ? luteola
Wahlenbergia stricta
Wurmbea dioica
Xerochrysum viscosum