

Wednesday Walk – Monga Forest Drive – 3 June 2015

Our trips to Monga Forest are mainly drives with various random stops on the loop from the western side via Granite Bluff Forest Road, Saddleback Road, Milo Road to River Forest Road. There are maps at both the eastern and western entrances to Monga National Park, as well as at the picnic area. There is wet sclerophyll forest as well as some rainforest. Our first stop was at the creek after we entered the National Park from the west where we had morning tea and a look around the creek. We found *Acacia ulicifolia* with a few flowers. We then drove to the top of the ridge, stopping to admire *Banksia spinulosa* flowering, before turning onto Saddle Back Rd. We had a little ramble, finding *Acacia obtusifolia*, *Arrhenechthites mixta*, *Helichrysum leucopsideum*, *Pratia purpurascens* and some flowers and fruit on *Persoonia linearis*. Our next stop was at the correas (*C. lawrenciana* var. *cordifolia*) which were flowering well. We then descended through fantastic tree ferns to River Forest Road and had lunch at the Waratah Picnic Area. We did the short walk there, seeing some *Telopea mongaensis* beside the river. Some finished off with a visit to Penance Grove, where we did a quick walk of the boardwalk.

For the images below: MB = Martin Butterfield, MSK = Merelyn Southwell-Keely



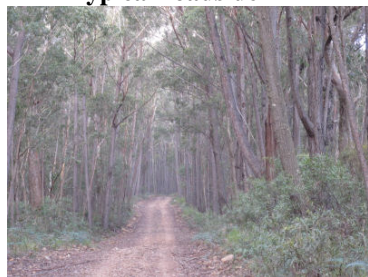
Typical roadside MB



Cyathea australis MB



Gleichenia dicarpa MB



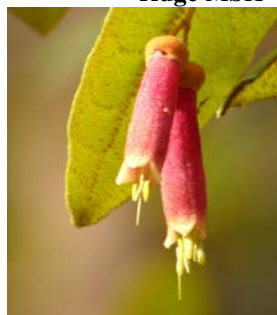
Eucalyptus sieberi trunks, top of the ridge MSK



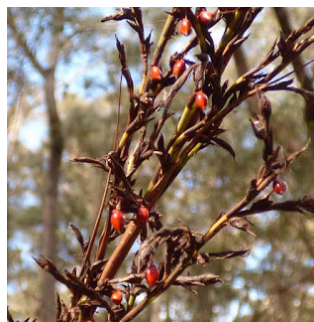
Entolasia sp. MB



Acacia ulicifolia MB



Correa lawrenciana var. *cordifolia* MB



Gahnia sp. MB



Banksia spinulosa MB



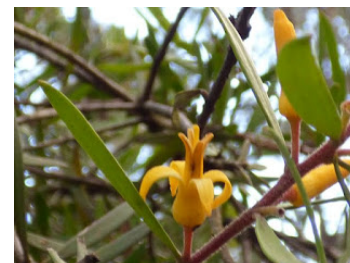
Persoonia linearis fruit MB



Podolobium ilicifolium MB



Solanum aviculare MB



Persoonia linearis flowers MB

Plant List for Monga Forest Loop - 3 June 2015

? indicates that those present were unsure of the plant name

1st Stop (near creek)

Acacia ? falcata
Acacia dealbata
Acacia falciformis
Acacia melanoxylon
Acacia terminalis
Acacia ulicifolia
Arrhenechthites mixtus
Blechnum sp.
Bursaria spinosa
Cassinia longifolia
Cassytha sp.
Clematis aristata
Coronidium sp.
Daviesia ulicifolia
Dianella caerulea
Dianella tasmanica
Echinopogon sp.
Entolasia sp.?
Eucryphia moorei
Gahnia sieberiana
Geranium sp.
Glycine clandestina
Goodenia hederacea ssp. alpestris
Gratiola peruviana
Hakea eriantha
Hardenbergia violacea
Hypericum gramineum
Indigofera australis
Leptospermum lanigera
Leptospermum polygalifolium
Leptospermum trinerva
Leucopogon lanceolatus
Lindsaea microphylla
Lomandra longifolia
Lomatia myricoides
Olearia erubescens
Persoonia linearis
Plantago debilis
Podolobium ilicifolium
Pomaderris betulina ssp. betulina
Prostanthera lasianthos
Ranunculus sp.
Rubus sp.
Schoenus melanostachys
Senecio linearifolius

Smilax australis
Stackhousia monogyna
Stylidium armeria
Stypantra glauca
Tetratheca bauerifolia
Veronica derwentiana
Veronica sp.
Viola betonicifolia
Xerochrysum bracteatum

2nd Stop

Acacia obtusifolia
Banksia spinulosa
Hibbertia sp.

3rd Stop (Saddle Back Rd, top of ridge)

Acacia obtusifolia
Arrhenechthites mixtus
Clematis aristata
Daviesia ulicifolia
Dianella tasmanica
Entolasia sp.
Eucalyptus sieberi
Hakea eriantha
Helichrysum leucopsidium
Hydrocotyle laxiflora
Leucopogon lanceolatus
Lomandra longifolia
Persoonia linearis
Poranthera microphylla
Pratia purpurescens
Pteridium esculentum

4th Stop

Acacia ? falcata
Acacia obtusifolia
Amperea xiphoclada
Correa lawrenceana var. cordifolia
Cyathea australis
Gahnia sp.
Gleichenia dicarpa
Gonocarpus sp.
Leucopogon lanceolatus
Lindsaea microphylla
Lomatia myricoides
Persoonia linearis

Pteridium esculentum
Sticherus lobatus
Stylidium armeria

Waratah Walk, Waratah Picnic Area

Acacia trachyphloia
Blechnum sp.
Bursaria spinosa
Dianella tasmanica
Eucalyptus sieberi
Eucalyptus viminalis
Gleichenia dicarpa
Lepidosperma sp.
Lomandra longifolia
Lomatia myricoides
Lycopodium deuterodensum
Prostanthera lasianthos
Pteridium esculentum
Smilax australis
Tasmania lanceolata
Telopea mongaensis

Bird List

Crimson Rosella
Superb Lyrebird
White-throated Treecreeper
Eastern Spinebill
White-naped Honeyeater
Spotted Pardalote
White-browed Scrubwren
Brown Thornbill
Grey Shrike-Thrush
Grey Fantail
Eastern Yellow Robin