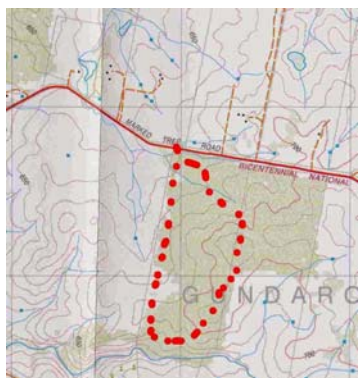


Wednesday Walk – Mcleods Creek Nature Reserve – 7 May 2014

The Nature Reserve is on Marked Tree Road, near Gundaroo. Our first visit was in May 2012 where we were mainly in the grassland area. A return visit in October 2012 saw us in the forest area and it was here we once again returned. There were a few plants with a few flowers - *G. lanigera* (including possibly a hybrid form), *Goodenia hederacea*, *Hibbertia obtusifolia*, *Hypericum gramineum*; *Melichrus urceolatus*, *Dillwynia sericea* and an early harbinger of winter - *Acacia genistifolia*. There were some orchids - several colonies of *Corunastylis* sp., *Diplodium truncatum* (including one colony with over 20 flowers) and right towards the end a specimen of *Speculantha rubescens*. We also saw many rosettes of greenhoods of some sort a few *Thelymitra* leaves. Several new species were added to our already long list.

For the images below: JG = Jean Geue, MB = Martin Butterfield, RF = Roger Farrow.



Route followed MB



Pultenaea setulosa & *Eucalyptus macrorhyncha* habitat RF



Pultenaea setulosa JG



Hybrid grevillea JG



Grevillea lanigera JG



Grevillea lanigera RF



Hibbertia calycina RF (note in-rolled edges of leaf higher than mid-vein)



Corunastylis sp. MB



Speculantha rubescens RF



Diplodium truncatum RF



Solenogyne dominii JG



Opercularia hispida JG



Oxalis exilis MB



Acacia genistifolia MB



Wahlenbergia stricta rosettes RF



Cassinia arcuata JG



Hibbertia calycina JG



Dillwynia sericea JG



Cymbonotus lawsonianus JG

Plant List for Mcleods Creek Nature Reserve – 7 May 2014

? indicates that those present were unsure of the plant name

Acacia dealbata	Diplodinium truncatum
Acacia genistifolia	Diuris sp. (leaves)
Acacia gunnii	Drosera sp.
Acacia implexa	Eleocharis acuta
Acacia parramattensis	Eucalyptus goniocalyx
Acrotriche serrulata	Eucalyptus macrorhyncha
Amyema miquelii	Eucalyptus mannifera
Aristida ramosa	Eucalyptus melliodora
Astroloma humifusum	Eucalyptus polyanthemus
Bossiaea buxifolia	Eucalyptus rossii
Brachyloma daphnoides	Euchiton sp.
Brachyscome rigidula	Exocarpos cupressiformis
Cassinia aculeata	Galium gaudichaudii
Cassinia arcuata	Geranium sp.
Cassinia longifolia	Glycine clandestina
Cassytha pubescens	Gompholobium huegelii
Cheilanthes austrotenuifolia	Gonocarpus tetragynus
Cheilanthes sp.	Goodenia hederacea
Cheiranthra linearis	Greenhood rosettes
Chrysocephalum apiculatum (green)	Grevillea lanigera
Corunastylis cornuta	Hibbertia calycina
Cryptandra amara var. longiflora	Hibbertia obtusifolia
Cymbonotus lawsonianus	Hovea heterophylla
Daucus glochidiatus	Hydrocotyle laxiflora
Daviesia genistifolia	Hypericum gramineum
Daviesia leptophylla	Indigofera australis
Desmodium varians	Juncus sp.
Dianella revoluta	Lepidosperma laterale
Dillwynia sericea	Leptorhynchos squamatus

Lissanthe strigosa
Lobelia pedunculata
Lomandra filiformis ssp. coriacea
Lomandra filiformis ssp. filiformis
Lomandra longifolia
Lomandra multiflora
Luzula densiflora
Melichrus urceolatus
Microlaena stipoides
Microseris lanceolata
Microtis sp.
Opercularia sp.
Oxalis exilis
Poa sieberiana
Podolepis jaceoides
Pultenaea setulosa

Rytidosperma pallidum
Rytidosperma pilosum
Senecio quadridentatus
Solenogyne dominii
Specularantha erubescens
Stackhousia monogyna
Stellaria pungens
Stylidium graminifolium
Thelymitra sp.
Themeda triandra
Tricoryne elatior
Veronica calycina
Vittadinia muelleri
Wahlenbergia gracilis
Wahlenbergia stricta
Xerochrysum viscosum