



Seasons Greetings. Wishing you all a happy holiday season and 2023.

Members Meeting

Thursday, 8 December

7.30 pm note ANBG access times below.**

ANBG Theatrette, Clunies Ross St, Black Mountain.

**** Please note –our gate minder will open the ANBG gates at 6.50pm and close them at 7.35pm so (s)he can attend the meeting.**

Gate Minder: ANBG staff.

There will be a ‘Christmas supper’ in the Dickson Room after the Meeting. Please bring a plate to share.

Meeting Book Sales: as usual. See item on page 3

December Raffle prizes: The plants will be provided by: member grower Linda Tabe and ANPSC’s propagation group.

Show and Tell: Please bring along any plant material or pot plants you think we would find interesting and like to see.

Reminder it is important to bring any Myrtaceae specimens into ANBG in plastic bags.

ANPSC Membership renewal due 1 January 2023.

ANPSC membership year is the calendar year and therefore you should renew your membership in January via our website. Please go to page 3 for details on how best to do your renewal.
Karen O’Brien, Membership Secretary.

***Please note our new Post Office Box – see above.**

Meeting Talk: The grazing legacy of the outback and its impact on the flora we see today.

Roger promises to give us another of his interesting talks illustrated with lots of his photos.

Guest Speaker: Roger Farrow.

Roger is a retired entomologist and has taken up an interest in native plants since leaving CSIRO more than 20 years ago. He is particularly interested in the relationships between insects and plants, especially pollination strategies. He is the author of the book *Insects of Southeastern Australia* and co-author of *Field Guide to Orchids of the Southern Tablelands of NSW* including the ACT.



Gail Ritchie Knight photo.

Roger is a life member of ANPSC. He led ANPSC field trips and wednesday walks for a number of years focussing on places with special floras and rare species. Roger has a special interest in alpine floras and has travelled extensively to places like Tibet, Iran and Ethiopia and Peru as well as in arid floras visiting places like Namibia and Madagascar.

Australian Plants publication - new arrangements. **Up until now members have been able to subscribe to and receive Australian Plants through their ANPSC membership.**

As ANPSC’s Journal is now going electronic and we are no longer posting a hard copy to the majority of the membership, we will not have the facility to distribute *Australian Plants* to those members who subscribe to that publication with their membership.

We will post out the remaining Australian Plants issue due for this year, 2022. Please note that along with your ANPSC membership, existing *Australia Plants* subscriptions are due for renewal on 1 January 2023.

From 1 January 2023, members who wish to continue their Australian Plants subscription will be responsible for subscribing directly to Australian Plants to receive further issues. For *Australian Plants* subscription information go to the inside of the back cover of any copy of *Australian Plants* publication.
Christine Kendrick, Secretary.

Australian Plants is a quarterly publication produced by the Australian Native Plants Society, NSW on behalf of the Australian Native Plants Society (Australia) (ANPSA).

The deadline for articles for ANPSC’s March 2023 Journal is 1 February

Please send items/articles to Gail Ritchie Knight, our Journal Editor, at journal@nativeplantscbr.com.au

**Exhibitions at ANBG
Visitor Information Centre
9.30am to 4.30pm, daily**

Illuminate

24 November to 11 December

The 11th Annual Friends Photographic Group exhibition highlights the different moods and inhabitants of the Gardens.



Trees: Remnants & Reserves

14 December to 22 January 2023

An exhibition featuring drawings, by botanical artist Morgyn Phillips, recording just a few of the trees found in precious remnants of woodlands and forests along the east coast of Australia, and west of the Great Divide – to remind us of what little remains and what needs to be protected.



Moments in the Australian Bush

25 January to 26 February 2023

An exhibition exploring beautiful moments experienced in unique and special local environments of Namadgi, the Snowy Mountains, the Brindabellas, Tidbinbilla, and the Australian National Botanic Gardens.



Amy Beggs-French creates functional art with ceramics and Penny Deacon paints local wildlife and landscapes in watercolours and oils.

Beaver Galleries

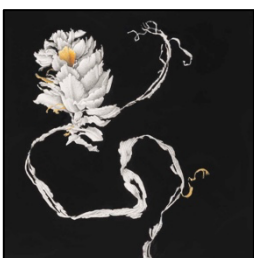
Small Works 2022 Exhibition

24 November – 23 December

Ceramics, glass, drawings, paintings, sculpture, weaving, works on paper.

Includes works by ANPSC supporters Sharon Field and Cathy Franzi.

Beaver Galleries, 81 Denison Street, Deakin.
Tuesday to Saturday 10am – 5pm.



**ANBG Thursday Talks, 12.30 - 1.30pm,
Theatrette**

Bookings open Friday before the talk until Wednesday night or until seating limits are reached. (Tickets are Free).

<https://www.friendsanbg.org.au/calendar>

These talks will recommence in February 2023.

A new Book

Native bees of the ACT and NSW South Coast – A spotter's guide by Peter

Abbott

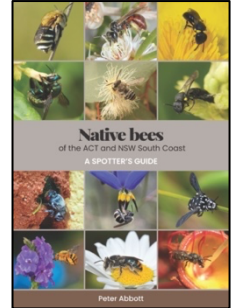
This guidebook will introduce readers to the gentle art of spotting and identifying native bees. It highlights the many and varied native bees in the ACT and NSW South Coast region. It is highly illustrated and written in non-technical language to assist readers to become

familiar with the local native bees. It also provides simple visual clues to assist in identifying the major bee groups and many individual species.

The aim of the book is for everybody to become native bee spotters and advocates for native bee conservation.

All information on availability, both online and bookshop outlets, can be found on the website

<https://nativebeesact.net>



Items of interest

From Bill Willis

For self-proclaimed 'gum nuts' this is eucalyptus heaven

<https://www.smh.com.au/lifestyle/life-and-relationships/for-self-proclaimed-gum-nuts-this-is-eucalyptus-heaven-20221110-p5bx6x.html>

Plant Sales

Australian Native Plant Market

Next Market Day - Saturday 3 December, 8.30am-3pm and then not until 4 February 2023. At Cool Country Natives, Pialligo

**Some of our member growers will be there*.*

This market is held on first Saturday of the month except in January and June to August.

Where to buy Native Plants in the Canberra Region Brochure

For latest version go to

<https://nativeplantscbr.com.au/wp-content/uploads/Where-to-buy-Native-Plants-in-the-Canberra-Region.pdf>

ANPSC calendar & services

Book Sales at Members Meetings

We have a few titles of new books at set prices - all very good value. In addition, there is a good range of second-hand books, donated by members, for a donation of your choice.

Next Council Meeting: Monday 5 December at 12.30pm, Celia Rosser Room, Banks Building, ANBG.

Council Business - Council Minutes are on our website in Members Area under 'Minutes'.

November Council Minutes will go up on the website after they are approved at the December Council Meeting

Next Bulletin: February 2023: If you have any items you think would be of interest to our members including photos, please send them by Wednesday 25 January 2023 to bulletin@nativeplantscbr.com.au

Updating your email Preferences

To change your Mailchimp preferences/details ie

- Email Address, First Name, Last Name
- Members Groups activity preferences: Field Trips, Propagation Group, Wednesday Walks, Daytime Activities

you go to a link at the bottom of the page of any Mailchimp announcement such as your Bulletin email. Just above the **black rectangle with MailChimp at the very bottom of the page is an underlined link update your preferences. If you click on that you will be sent an email that you use to take you to the webpage where you can change your details.

Example:

Want to change how you receive these emails?

You can [update your preferences](#) or [unsubscribe from this list](#).



ANPSC Contacts

President: Stephen Saunders
president@nativeplantscbr.com.au

Secretary: Christine Kendrick
secretary@nativeplantscbr.com.au

☎ 0403 199 211

Membership Secretary: Karen Brien
membership@nativeplantscbr.com.au

Bulletin Editor: Lucinda Royston
bulletin@nativeplantscbr.com.au

ANPSC Notices

New Members

A warm welcome to new members:

- ☘ Julie Gray
- ☘ Donald Beattie
- ☘ Andrew O'Reilly Nugent

Renewing your membership

Instructions on how to renew will be emailed to all members on 1 January.

Renewals are done using our website through the Members Area. **Please do not use** the new membership area.

Those few special members who receive the Bulletin by mail will be sent letters.

Life members please contact the membership secretary to be given your voucher code to renew without making a payment.

Any queries please contact Karen Brien at membership@nativeplantscbr.com.au

Christmas Items - supporting the Eremophila Study Group

The Eremophila Study Group is celebrating its 50th anniversary and has **launched an Eremophila-themed Christmas Card, birthday card, present-wrapping paper and a colouring book**, to raise funds for its research into Eremophila germination.

These items are available for sale to the general public. If you would like to see the range and order something, go to

anpsa.org.au/eremophilasg/merchandise.

The image from the front of the Christmas card and the images on the 500x700mm wrapping paper are shown below.



ANPSC's Plant Database - photos wanted

You can specify if the Society can use your photos for other purposes or just the online Plant Database.

You can check if a species is already illustrated by searching the Database at

<https://plantdatabase.nativeplantscbr.com.au>

Contact for queries is Lyndal Thorburn at lthorburn@viria.com.au



2022/2023 ANPS Council

ANPSC's new Council was elected at the November AGM Meeting.

List of Council members:

President - Stephen Saunders.

Vice President – Gail Ritchie Knight

Secretary - Christine Kendrick.

Treasurer – Merelyn Southwell-Keely

Assistant Sec/Treasurer – Garth Chamberlain

Other Council Members:

1. Thomas Jordan.
2. Lena Saboisky.
3. Glynn Shepherd
4. Jeanette Jeffrey
5. vacant.
6. vacant.

Members Meeting Speakers

Send speaker suggestions to our speaker organiser, Lena Saboisky, at lenasaboisky@gmail.com

Write-ups of Member's Meetings talks

For those who may not be able to attend meetings, we are trialling articles on the speaker presentations in our Journal. The October members meeting talk, speaker Woo O'Reilly on Waterwatch, will be in the December Journal.

Steve Saunders, President

*Reminder: Seed wanted of local species

A reminder that the Propagation Group is looking for seeds for pea species, in particular:

Bossiaea buxifolia and B prostrata; Daviesia leptophylla; Dillwynia phyllicoides and D. sp Yetholme; Gompholobium huegelli; Hovea heterophylla; Podolobium procumbens; Pultenaea procumbens and P. microphylla.

If anyone is growing these, and is willing to offer seed, would you please contact Lyndal Thorburn at lthorburn@viria.com.au or ☎0418 972 438, to arrange a suitable time to collect the seed ie later in the season, when seed have set.



Wednesday Walkers at Broadway
TSR out past Dalton.
Gail Ritchie Knight photos



Members Activities

DAGs & GDSG & WWs Christmas Gathering

Tuesday 13 December from 10.30am.

1048 Old Cooma Rd, Googong, NSW.

Hosts, Lyn and Peter Woodbury are looking forward to everyone coming along at 10.30am for a **walk in their large rural native garden** followed by an **end-of-year lunch** at 12.30pm.

Please bring a plate to share. Tea, coffee, crockery and cutlery will be kindly provided.

Lunch is under cover so rain will not be an issue.

All ANPSC members are invited to this event.

Field Trips

Our Field Trip Coordinator is Jeanette Jeffery

Contact: fieldtrip@nativeplantscbr.com.au

If you are interested in any field trips, email Jeanette to go on the emailing list.

For a particular field trip, email the contact person for that trip for more information and to book your spot on their list.

Future Field Trips

No trips have yet been proposed for 2023.

If anyone has some thoughts on a place to go with good companions and friends, please make a suggestion. I'm sure you will get takers!' Jeanette.

ANPSC Plant Sales

Our Plant Sale Coordinator is Tom Jordan

Contact: plantsales@nativeplantscbr.com.au

**Next Plant Sale is our Autumn Sale on
18 March 2023 at ANBG**

Wednesday Walkers (WWs)

Contact: Christine Kendrick at

secretary@nativeplantscbr.com.au

If you would like to receive information on future Wednesday Walks, go to the bottom of any ANPSC email and click on '[you can update your preferences](#)'.

Propagation

Propagation group queries to propagation@nativeplantscbr.com.au

Newcomers are always very welcome to join the propagation group activities and no experience is necessary. You do need to register your interest by emailing propagation@nativeplantscbr.com.au

December Propagation

Twilight Cutting and Seed Bee

Thursday 15 December, 4pm to 8pm

3 Considine Close, Greenleigh NSW.

This is our annual twilight bee and we'd love to see some new faces - no experience necessary - we will pair newbies with experienced propagators!

The Seed bee will include planting seeds of several local peas at the request of the Southern Tablelands Ecosystem Park (STEP), which has requested our assistance in developing a good local pea display. We will also be doing some ongoing maintenance including pot washing (we supply warm water!).

What to bring: cup, snacks to share for a Christmas get-together after the bee, secateurs, gloves. Tea, coffee and mosquito repellent will be provided.

Please let Nola know if you plan to come along nola_mckeeon@hotmail.com and please DO NOT attend if you have any cold symptoms or feel at all unwell.

Survey

Thank you to those who completed our survey - we will discuss any recommended changes to how we run things at our December meeting.

*Reminder: Seed wanted of local species

See page 4 for details.

January 2023 propagation activities

As there will be no ANPSC Bulletin in January, here is advance notice of activities in January 2023. January is a busy month for the Propagation Group!

Working Bee 1

Wednesday 11 January, 9:30 to 11:30am

3 Considine Close, Greenleigh, NSW.

Working Bee 2

Wednesday 18 January, 9:30 to 11:30am

CIT, Bruce.

These working bees will include weeding, any necessary cleaning (hotbeds, floors) and checking of supplies for the year.

Cutting Bee & Annual Planning meeting

Sunday 29 January, 9am to midday

3 Considine Close, Greenleigh, NSW

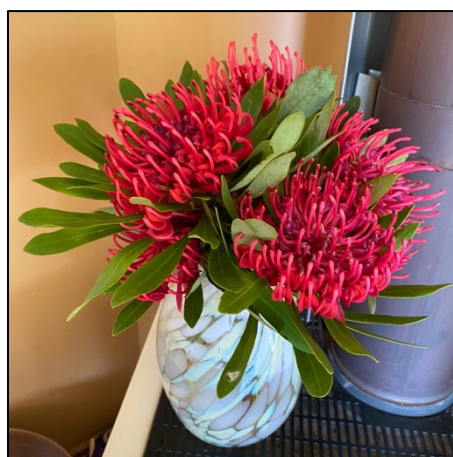
We will hold a cutting bee and annual planning meeting followed by lunch. Please bring labelled cuttings, secateurs, hats, sunscreen etc and some food to share for lunch. We will supply tea/coffee and insect repellent.

All members are welcome at any of these events - although they are each scheduled for 2-3 hours, you are welcome to come for a shorter period if needed.

Please let Nola know at nola_mckeeon@hotmail.com if you plan to come along, for how long and for which event and please DO NOT attend if you have any cold symptoms or feel at all unwell.



Flowering in Lyndal's and Tom's garden:
- Myoporum bateae x floribunda
- Pandorea Ruby Clusters
- Correa Bilby Blush
Lyndal Thorburn photos



Teloepa speciosissima 'Waratah' - from Lyn & Peter Woodbury's Googong NSW garden.
Bill Willis photo

Day Activity Group* & Garden Design Study Group

Contact: dagsleader@nativeplantscbr.com.au

Coordinating Committee members:

Digby Gascoine, Tom Jordan, Maureen Mallard, Pam Morrison.

* DAG

Register your interest in DAG in your membership record in our website members area to receive DAG MailChimp emails detailing the next activity.

Report of the DAG November Activity

On Tuesday 15 November, **Ben Taylor (Slow Growing Trees Pty Ltd)** hosted 22 DAGs members when they visited the Wild Native Landscape planted earlier this year in Fyshwick.

The planting on the industrial estate has been an opportunity to experiment with using some of the stewardship and care practices drawn from Charles Massy's body of work. Some of these practices are: allowing the presence of weedy species amongst native plantings; passive rainwater harvesting through subtle earthworks; testing and strategic interventions in the microbial populations in the soil; and the direct seeding of cool and warm-season native grasses. The plant palette composed of plants indigenous to the Canberra region, with some 66 species in total. DAG committee.

DAG 2023 Program

The DAG's Committee is now planning the 2023 program, including a visit to the Illawarra Grevillea Garden. If you have a garden you'd like to share with the group, or have a garden suggestion, please contact the DAGs Committee soon by emailing dagsleader@nativeplantscbr.com.au



Show and Tell – Flowering now in the Walcott garden.
Text by Ros Walcott and photos by Ben Walcott.



Callistemon 'Bronwen'
 Callistemon 'Bronwen' is a showy cultivar, 2m high x 2.5m wide, with hard, dull green foliage and large pink/purple bottlebrush flowers. We planted one in September 2014 and it first bloomed in November 2015.

Anigozanthos 'Bush Pearl'
 We planted three of these plants, height 0.5m, in November 2008, which initially bloomed for months. We divided them several times before eventually removing them in December 2013, as they were not doing well. We have now planted two in a trough in December 2019 and these are performing well so far.



Eremophila alternifolia x bignoniflora 'Meringur Crimson'
 We have planted four of these shrubs, 3m x 2m, with long thin pendulous foliage and pinkish crimson flowers, in 2018-19. These plants need well drained soil in full sun to part shade and are tolerant of drought and frost. The cultivar from the nursery is definitely pink and should properly be called 'Meringur Pink', while the one from a friend is truly vibrant crimson.



Leptospermum 'Tickled Pink'
 We planted this upright and spreading shrub, 2 m high x 1.5 m wide, with linear leaves and bright pink flowers with green centres, in October 2005. This hybrid is a cross between Leptospermum 'Cardwell' and L. 'Rhiannon' produced by Bywong Nursery, near Bungdendore, NSW.



Eucalyptus risdonii – Risdon Peppermint
 We planted this tree, height 8m, endemic to the dry slopes on the eastern side of the River Derwent near Risdon and Grass Tree Hill in southern Tasmania, in June 2016. This tree has smooth bark, egg-shaped blue-grey juvenile leaves arranged in opposite pairs, white flowers and cup-shaped fruit. Our first flowers arrived in October 2022.



Callistemon salignus - Willow Bottlebrush
 We planted, in 2003 as part of our foundation planting, a hedge of 65 Callistemon salignus, Willow Bottlebrush, or Melaleuca salicina as it is sometimes known now. This plant develops into a small tree to 8m high with a dense habit, papery bark and narrow leaves with pink new growth. The flower spikes can be cream, red or pink. We have pruned these every two years and they are now 5m high and have formed a dense hedge beloved by birds. Eight of these trees were trashed by the fall of a large pine in July 2016. This plant is native to forests and woodlands from south-eastern Queensland to southern New South Wales, usually in damp places.

Show and Tell - Flowering in Bill's and Heather's garden at Greenleigh, NSW.

Photos by Bill Willis



Lt - *Lotus australis*
Rt - *Orthrosathus multiflorus*



Rt - *Prostanthera*
'Poorinda Ballerina'



Above Lt - *Phebalium whitei* (threatened)
Above Rt - *Prostanthera ovalifolia*