



**Seasons Greetings. Wishing you all a happy holiday season and 2024.**

## Members Meeting

**Thursday, 14 December**

**7.30 pm\*\* note ANBG access times below.**

**ANBG Theatrette, Clunies Ross St, Black Mountain.**

**\*\* Please note –our gate minder will open the ANBG gates at 6.50pm and close them at 7.35pm so (s)he can attend the meeting.**

**Gate Minder:** Gail Ritchie Knight

**Meeting Book Sales:** See item on page 3.

**December Raffle prizes:** Mystery prizes.

**Show and Tell:** Please bring along any plant material or pot plants you think we would find interesting and like to see.

**Important Reminder:** bring Myrtaceae specimens into ANBG in plastic bags.

## **ANPSC Membership renewal due 1 January 2024.**

ANPSC membership year is the calendar year and therefore you should renew your membership in January via our website.

Please go to page 3 for details on how best to do your renewal.

Karen Brien, Membership Secretary.

## **Deadline for articles for our March 2024 Journal is 1 February.**

**We'd love to hear what you have been doing and seeing.** Please send articles, long or short, with or without photos. Send high resolution images separately, not embedded in a document.

**Send them to** Gail Ritchie Knight, our Journal Editor, at

[journal@nativeplantscbr.com.au](mailto:journal@nativeplantscbr.com.au)

**There will be a 'Christmas supper' in the Dickson Room after the Meeting. Please bring a plate to share.**

## **Meeting Talk: Secondary pollen presentation and poricidal anthers: two specialised floral traits.**

Flowering plants have evolved several ingenious mechanisms to restrict the availability of pollen as a food resource for insect visitors and these can be easily recognised among our local flora. These include the ejection of pollen by sonication from the anthers through terminal pores (buzz 'pollination') and the shedding of pollen from the anthers onto an alternative site in the flower usually the female stigma or style (secondary pollen presentation) and are the subject of Roger's talk.

Three of the plant families involved are largely Australian in origin namely Proteaceae, Goodeniaceae and Stylidaceae. Roger will illustrate how these adaptations function on visiting insects to achieve cross pollination.

## **Guest Speaker: Roger Farrow.**

Roger is a retired entomologist and has taken up an interest in native plants since leaving CSIRO more than 20 years ago. He is particularly interested in the relationships between insects and plants, especially pollination strategies. He is the author of the book *Insects of Southeastern Australia* and co-author of *Field Guide to Orchids of the Southern Tablelands of NSW* including the ACT.

Roger is a life member of ANPSC. He led ANPSC field trips and wednesday walks for a number of years focussing on places with special floras and rare species. Roger has a special interest in alpine floras and has travelled extensively to places like Tibet, Iran and Ethiopia and Peru as well as in arid floras visiting places like Namibia and Madagascar.



Gail Ritchie Knight photo.

## **ANPSC's Council for 2023/2024 - members and Council vacancies**

At our recent AGM, we elected a President and six Council members. See page 3 for details. This gives us only seven members as against the maximum allowed of 11, and just meets the quorum needed of six. Importantly, the positions of Treasurer and Secretary remain vacant, though we are getting by as we can, with interim or makeshift arrangements.

After 11 December, our next Council Meeting is early in February 2024. In the meantime, we'd appreciate approaches from members, willing to serve on Council or as Office Bearers. Please contact me at [president@nativeplantscbr.com.au](mailto:president@nativeplantscbr.com.au) Steve Saunders, President.

## Exhibitions at ANBG

Visitor Information Centre  
9.30am to 4.30pm, daily

### Illuminate 23

Until 10 December

The 10th annual exhibition of the Friends of the ANBG Photographic Group.

The exhibition features a range of photographs taken within the Gardens. All photographs exhibited are for sale as well as unframed prints, cards, and specialty calendars by individual members.



### Transformations: Art of the Scott Sisters

13 December to 25 February

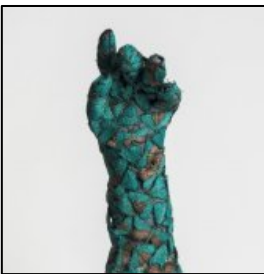
This exhibition brings to life the work of Harriet and Helena Scott. With their paintbrushes, microscopes and magnifying glasses, they worked together to transform nature into art in extraordinary paintings of moths and butterflies.



### Gardening Gloves

13 December to 25 February

An exhibition by local artist Sharon Peoples featuring sophisticated individual embroidered gloves using moths and butterflies found in the Canberra hills.



Fran's garden  
- Actinotus helianthe  
- Leptospermum sp.

Photos by Paul Goggin



## ANBG Thursday Talks

12.30 - 1.30pm, Theatrette

Bookings open Friday before the talk until Wednesday night or until seating limits are reached. (Tickets are Free).

<https://www.friendsanbg.org.au/calendar>

These talks will recommence in February 2023/24



**\*ANPSA Biennial Conference 2024**  
**'Gardens for Life'**  
**30 September to 4 October 2024**  
**Melbourne Conference and Exhibition Centre**  
Hosted by APS Victoria  
We encourage all ANPSC members to consider attending this conference.  
For more details and to register your interest go to:  
<https://apsvic.org.au/anpsa-biennial-conference-2024/>  
\*Australian Native Plants Society Australia

### Australian Plants publication

Produced quarterly by the Australian Plants Society, NSW on behalf of the Australian Native Plants Society (Australia) (ANPSA).

Members who wish to subscribe to *Australian Plants* contact:

[office@austplants.com.au](mailto:office@austplants.com.au)

For more information go to:

<https://anpsa.org.au/about/publications/>



## Plant Sales

**Next ANPSC Plant Sale is our Autumn Sale on 16 March 2024 at ANBG**

### Australian Native Plant Market

At Cool Country Natives, Pialligo

Next Market Day - Saturday 3 February 2024, 8.30am-3pm.

This market is held on first Saturday of the month except in January and June to August.

### Where to buy Native Plants in the Canberra Region Brochure

The 2023 version of ANPSC's *Where to buy Native Plants in the Canberra Region* is now available. Go to

<https://nativeplantscbr.com.au/>

## ANPSC calendar & services

### Book Sales at Members Meetings

We have a few titles of new books at set prices - all very good value and a good range of second-hand books, donated by members, for a donation of your choice.

**Next Council Meeting:** Monday 11 December at 12.30pm, Dickson Room, Banks Building, ANBG.

### Council Business - Council Minutes are on our website in Members Area under 'Minutes'.

November Council Minutes will go up on the website after they are approved at the December Council Meeting.

**Next Bulletin: February 2024** If you have any items you think would be of interest to our members including photos, please send them by Wednesday 24 January to [bulletin@nativeplantscbr.com.au](mailto:bulletin@nativeplantscbr.com.au)

### Members Meeting Speakers

Send speaker suggestions to our speaker organiser, Roger Farrow at [r.farrow@iimetro.com.au](mailto:r.farrow@iimetro.com.au)

### Write-ups of Member's Meetings talks

For those who may not be able to attend meetings, we are including articles on the speaker presentations in our Journal.

### Updating your email Preferences

To change your Mailchimp preferences/details:

- Personal details; and
- Members Groups activity preferences.

Go to a link at the bottom of the page of any Mailchimp announcement such as your Bulletin email. Just above the \*\*black rectangle with MailChimp at the very bottom of the page is an underlined link [update your preferences](#). If you click on that you will be sent an email that you use to take you to the webpage where you can change your details.

Example:

Want to change how you receive these emails?

You can [update your preferences](#) or [unsubscribe from this list](#).



## ANPSC Contacts

**President:** Stephen Saunders  
[president@nativeplantscbr.com.au](mailto:president@nativeplantscbr.com.au)

**Secretary:** Vacant  
[secretary@nativeplantscbr.com.au](mailto:secretary@nativeplantscbr.com.au)

**Membership Secretary:** Karen Brien  
[membership@nativeplantscbr.com.au](mailto:membership@nativeplantscbr.com.au)

**Bulletin Editor:** Lucinda Royston  
[bulletin@nativeplantscbr.com.au](mailto:bulletin@nativeplantscbr.com.au)

## ANPSC Notices

### Welcome to our new Members:

- ☼ Michael Robbins
- ☼ Simon Veitch
- ☼ Kerry Jackson
- ☼ Margaret Strong
- ☼ Thomas Taylor

### Renewing your membership

**Instructions on how to renew will be emailed to all members on 1 January.**

Renewals are done using our website through the Members Area. **Please do not use** the new membership area.

Those few special members who receive the Bulletin by mail will be sent letters.

Life members please contact the membership secretary to be given your voucher code to renew without making a payment.

Any queries please contact Karen Brien at [membership@nativeplantscbr.com.au](mailto:membership@nativeplantscbr.com.au)

### ANPSC Council for 2023/2024

ANPSC's new Council was elected at the November AGM Meeting.

### List of Council members:

- President** - Stephen Saunders.
- Vice President** – Vacant
- Secretary** - Vacant
- Treasurer** – Vacant
- Assistant Sec/Treasurer** – Vacant

### Other Council Members:

1. Garth Chamberlain
2. Jeanette Jeffrey
3. Thomas Jordan.
4. Gail Ritchie Knight
5. Lena Saboisky.
6. Glynn Shepherd

### ANPSC's Plant Database - photos wanted.

You can specify if the Society can use your photos for other purposes or just the online Plant Database.

You can check if a species is already illustrated by searching the Database at

<https://plantdatabase.nativeplantscbr.com.au>

Contact for queries is Lyndal Thorburn at [lthorburn@viria.com.au](mailto:lthorburn@viria.com.au)



## Members Activities

### Propagation

Propagation group queries to  
[propagation@nativeplantscbr.com.au](mailto:propagation@nativeplantscbr.com.au)

Newcomers are always very welcome to join the propagation group activities and no experience is necessary. You do need to register your interest by emailing [propagation@nativeplantscbr.com.au](mailto:propagation@nativeplantscbr.com.au)

### Propagation Bee

**Thursday 7 December, 4.00 to 7:00 pm**  
**3 Considine Close Greenleigh NSW.**

We will be doing some cuttings and some potting up, possibly a little pot washing.

As this is our final event for the year please also bring something to share for "Christmas Cheer", along with the usual gloves, hats, sunscreen, mug and secateurs.

Any queries please phone Lyndal Thorburn on ☎0418 972 438 and please register your intent to attend with Nola via [propagation@nativeplantscbr.com.au](mailto:propagation@nativeplantscbr.com.au)

### November Propagation activity

'The Propagation group had a successful and delightful cutting bee at the Burra home of Roger Farrow and Christine Kendrick in November. **See Lyndal's photos below.** We welcomed a new member, Odette, from Burra.' Lyndal.



### Propagation Planning Meeting & Cutting Bee

**Sunday 21 January, 9.30am to 12.30pm**  
**3 Considine Close Greenleigh NSW.**

Please bring the usual: hat, sunscreen, secateurs, mug plus snack or sandwich. Tea/coffee will be provided.

### January Working Bees – at CIT and Queanbeyan.

There will be 2 maintenance/working bees in January – 1 each at CIT and at Greenleigh. Propagation members will be emailed about these activities directly.  
Lyndal

### Field Trips

#### Our Field Trip Coordinator is Jeanette Jeffery

Contact: [fieldtrip@nativeplantscbr.com.au](mailto:fieldtrip@nativeplantscbr.com.au)

Email Jeanette to go on the emailing list and keep up to date with Field Trip arrangements.

For a particular field trip, email the contact person for that trip for more information and to book your spot on their list.

### Field Trip - late January/early February.

A Field Trip to the Victorian Alps in late January to early Feb, straight after school goes back is being put together.

Spending some time doing walks in the Bogong High Plains area and Falls Creek is being planned. The options being looked at include return routes, 6-7km in length and moderately hilly. We feel everyone should be able to enjoy these. The Alpine wildflowers should be good at this time.

**If you are interested in attending** please make sure Jeanette, Field Trip Co-ordinator, has your emails to send you further news on this trip - and future trips.  
Email: [jefferyjeanette@gmail.com](mailto:jefferyjeanette@gmail.com)

#### Accommodation options:

**Lake Catani, Falls Ck:** Caravan Park;

**Mt Beauty (Tawong Sth):** Caravan Park, Motels;

**Bright:** Caravan Park, Motels.

### Future Trips suggestions

'If you have thoughts on a place to go with good companions and friends, please make a suggestion. I'm sure you will get takers!' *Jeanette*

Leptorhynchos squamatus.  
Photo by Lucinda Royston



## ANPSC Plant Sales

Our Plant Sale Coordinators are Alison Roach and Georgie Till.

Contact: [plantsales@nativeplantscbr.com.au](mailto:plantsales@nativeplantscbr.com.au)

## ANPSC's next Plant Sale is our Autumn Sale on 16 March 2024 at ANBG.

### Wednesday Walkers (WWs)

Contact: Christine Kendrick at [christine.kendrick@me.com](mailto:christine.kendrick@me.com)

If you would like to receive information on future Wednesday Walks, go to the bottom of any ANPSC email and click on 'you can update your preferences'.

### Photos from WWs outing on 15 November – Yerrabi Track to Boboyan Trig

Yerrabi Track begins at Boboyan Road as a gently sloping track down to a large area of swampy grassland. At the far side of the swamp the climb along a fairly steep track led us through a forested area until we reached Boboyan Trig and granite outcrops. The vegetation is low there and there are magnificent views of Bimberi Wilderness and mountain ranges.



Photos by Gail Ritchie Knight & Lucinda Royston



- Ranunculus lappaceus
- Hakea macrocarpa
- Veronica derwentiana
- Podolobium alpestre



- Rt
- Euphrasia collina ssp. Paludosa
  - Hibbertia obtusifolia
  - Olearia erubescens
  - Diuris semilunulata



## Day Activity Group\* & Garden Design Study Group

Contact: [dagsleader@nativeplantscbr.com.au](mailto:dagsleader@nativeplantscbr.com.au)

### Coordinating Committee members:

Digby Gascoine, Tom Jordan, Maureen Mallard, Fran Middleton, Pam Morrison.

\* DAG

\*\*Register your interest in DAG in your membership record in our website members area to receive DAG MailChimp emails detailing the next activity.

## DAGs & GDSG & WWs Christmas Gathering

**Tuesday 19 December from 11.30am.**

**1048 Old Cooma Rd, Googong, NSW.**

Hosts, Lyn and Peter Woodbury are looking forward to everyone coming along at 11.30am for a **walk in their large rural native garden** followed by an **end-of-year lunch** at 12.30pm.

**Please bring** a plate to share. Tea, coffee, crockery and cutlery will be kindly provided.

Lunch is under cover so rain will not be an issue.

**All ANPSC members are invited to this event.**

Looking forward to seeing you there.

Christine Kendrick.

## Report on DAG November Activity – garden visit in Isaacs

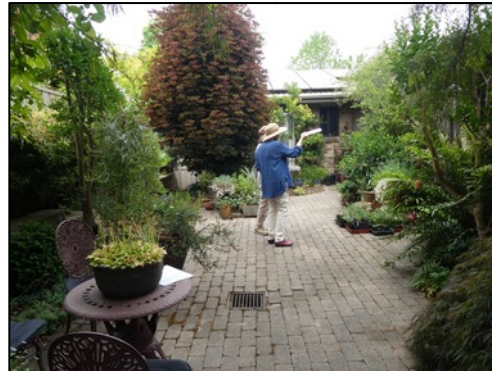
On 14 November, 30 DAGs members visited the very interesting garden of Fran Middleton in Isaacs. This garden, on a corner block of 884 square metres plus verges, was started in 1990 before Fran became enthusiastic about native plants.

It is now a mix of native and exotics which Fran has combined in a coherent way. About 10 years ago she began the process of replacing many of the exotic plants with natives and as the native plants have grown Fran's garden has also been enjoyed by many native birds, reptiles and insects. Many plant families are represented and Fran has a particular interest in Rutaceae. The garden has a number of different areas with well designed paths for visitors to explore.

During a sumptuous morning tea many of us enjoyed the water feature, which was very quickly visited by the native birds as people started leaving. The chatting continued over lunch which was held at the Mawson Club.

## 2024 Program

This is currently being put together, with the first activity to be held in February. If ANPSC members have a garden they would like to share with other members, or know of a garden that would be of interest to members, please contact the DAGs Committee at [dagsleader@nativeplantscbr.com.au](mailto:dagsleader@nativeplantscbr.com.au)



Fran's garden  
Photos by Paul Goggin & Lucinda Royston



## Show and Tell – Flowering now in Ros and Ben’s Red Hill garden.

Text by Ros Walcott and photos by Ben Walcott.



### ***Brachychiton* ‘Griffith Pink’**

We planted this hybrid tree, *B. populneus* x *discolor*, height 6-8m, width 3-4m after 15-20 years, with glossy lobed foliage and clusters of pink flowers that appear in summer, in November 2015. The flowers are attractive to birds. This plant had a miraculous escape from fall of a large pine in July 2016 and is flowering spectacularly this year.



### ***Callistemon ptyoides* (syn. *Melaleuca ptyoides*) - Alpine Bottlebrush**

For many years confused with *Callistemon sieberi*. Native to areas above 2000 m down to around 900 m. Grows commonly in and around sphagnum bogs and swamps and along watercourses in Queensland, New South Wales and Victoria. In its mountain habitat *Callistemon ptyoides*, 3m high x 2m wide, flowers late in the season, but when it does bloom masses of small, dense, cream (rarely pink) brushes are borne on the ends of the branches. We planted three in 2003 and they bloom reliably each year.



### ***Brachychiton* ‘Bella Pink’**

We planted this hybrid tree, *B. populneus* x *acerifolius*, height 6-8m and width 3-4m, with glossy lobed foliage and clusters of salmon pink bell flowers that appear in summer, in December 2013. The flowers are attractive to birds.

### ***Cassinia aureonitens* – Yellow Cassinia**

We planted three of these erect shrubs, 1.5-2.5m high x 1.5-2m wide, with dark green linear leaves and dense clusters of bright yellow flowers, in February 2022. These plants will thrive in full sun or shady positions in free draining soils and have moderate frost and drought tolerance. This plant is native to NSW from Taree to Eden.



### ***Lomatia myricoides***

We planted eleven of these rounded open shrubs or small trees, 5m high by 3m wide, with dark green, narrow, sparsely toothed leaves and sprays of cream flowers, in December 2003, as part of our foundation planting. This plant is hardy in shade or sun and the flowers are suitable for cutting. These plants are native to open forests of eastern NSW and Victoria, usually in moist locations. We cut all these plants back to the ground as all were browned off in the heat and dryness of January 2014 – all removed except one.

### ***Graptophyllum ilicifolium* x *G. excelsum* ‘Holly Hedge’**

We planted this low bushy shrub, 1.5m high x 1m wide, with prickly foliage and brilliant red glossy ‘fuchsia’ flowers in a pot in November 2019. This plant had its first flowers in November 2020 and bloomed for two months.